

BHARAT⁴

**DISCOVER
THE POWER OF
TECHNOLOGY.**

— THE ALL NEW —
**BHARATBENZ HEAVY DUTY
HAULAGE TRUCKS**



POWERED BY
PROFIT
TECHNOLOGY



BHARATBENZ

BOOST YOUR PROFITS WITH HEAVY DUTY HAULAGE

BharatBenz, global pioneers in technology, bring you trucks powered by Profit Technology. Our trucks strike the perfect balance between cutting-edge world class technology and a rugged build that is perfectly suited to Indian conditions. The all new BharatBenz heavy duty haulage trucks are powerful workhorses built to maximise your profitability.



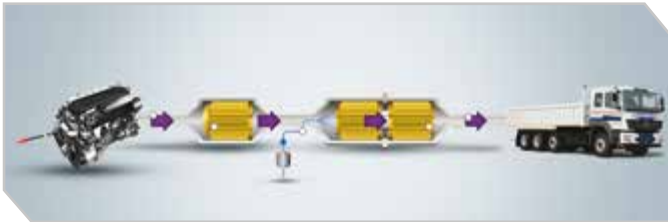
BHARATBENZ TRUCKS

Built with superior SCR technology these trucks offer you unmatched fuel efficiency. Their superior power, gradeability and torque make them capable of handling any work and terrain. Their higher uptime, superior comfort & safety features, reliability and durability ensure that your trucks spend maximum time on the road. With these low maintenance haulage trucks at your disposal, your enterprise is bound to scale new heights.



THE NEW FUEL EFFICIENCY BENCHMARK.

The all new BharatBenz heavy duty haulage trucks have set a fuel efficiency benchmark that surpasses the record held by our previous generation. Its efficient engine combined with advanced engineering ensures the best mileage. Such superior mileage will bring down the cost of each trip and help you earn more.



Selective catalytic reduction (SCR)

SELECTIVE CATALYTIC REDUCTION (SCR) BSIV TECHNOLOGY

SCR is an advanced emission technology that injects AdBlue into the exhaust gases emitted while the truck is in operation. AdBlue is a high quality urea solution that reduces emission of nitrogen oxide. Used by most of the global manufacturers, SCR is considered as one of the world's most fuel efficient and profitable BSIV technologies.



Fuel injection system

FUEL INJECTION SYSTEM

6 individual fuel pumps, one for each cylinder, inject precise quantity of fuel at a high pressure of 1800 bar for 25, 31 and 37 tonne trucks and 1600 bar injection pressure in 16 tonne trucks. This ensures better combustion of fuel, delivering unmatched fuel efficiency.

FLAT TORQUE CURVE

Peak torque is available over a wide range of engine speeds and high torque is available even at lower engine speeds. This reduces the need for frequent gear shifts and improves fuel efficiency.

Model	Peak torque	Flat torque range
1617 haulage	520 Nm	1500 – 2000 rpm
2523 haulage	850 Nm	1200 – 1600 rpm
3123 haulage	850 Nm	1200 – 1600 rpm

HIGH BOOST PRESSURE TURBO CHARGER

With its reduced area, the updated turbo charger design with 1.8 bar boost pressure allows more air through the air inlet, increasing air flow at significantly lower rpm, which further boosts the fuel efficiency of the BharatBenz heavy duty haulage trucks.

TUBELESS TYRES WITH STEEL RIMS

The single part-tyre weighs less, offering lower rolling resistance and thereby ensuring lower fuel consumption. As there is no tube, there is lower heat generation due to friction, leading to longer tyre life. In the event of a puncture, there is only partial loss of air. The lower aspect ratio (0.75 - 0.9) increases stability. The all wheel pattern also gives BharatBenz heavy duty haulage trucks the advantage of uniform tyre wear, leading to improved tyre life.



Variable green band



Constant throttle valve engine brake

VARIABLE GREEN BAND

Variable green band (for engine rpm) in the instrument cluster of 25, 31 and 37 tonne trucks intelligently senses the optimal operating band for the vehicle and gives constant indication to the driver about economical driving. This ensures that the vehicle operates in the most fuel efficient rpm range and is driven at the right speed and gear.

CONSTANT THROTTLE VALVE ENGINE BRAKE

A constant throttle valve in the engine of 25, 31 and 37 tonne trucks bypasses compressed air when the engine brake is on. The Electronic Control Unit (ECU) senses this and cuts fuel injection into the engine. This not only saves the engine from overrunning, but also saves fuel while the truck runs with its exhaust brake activated.

OVERDRIVE GEARBOX

This allows the BharatBenz heavy duty haulage trucks to cruise at sustained speeds with reduced rpm, leading to better fuel efficiency on the highways.

E-VISCOUS FAN

The high performance engine can be cooled as and when required by the Electronic Control Unit (ECU) with the help of the Smart fan, which ensures unmatched cooling efficiency.



E-viscous fan



Aerodynamic cabin design

AERODYNAMIC CABIN DESIGN

The cabin design ensures lower aerodynamic resistance which helps maintain the momentum of the vehicle while burning less fuel.

UNMATCHED UPTIME. RUGGED BUILD.



The BharatBenz heavy duty haulage trucks are meant for hard work in tough conditions. To deliver under such harsh conditions, each component of these trucks have been designed and incorporated with meticulous care. Our highly reliable and durable haulage trucks will always be on the move, guaranteeing maximum asset utilisation.



170 hp engine



235 hp engine

ENGINE

These haulage trucks are equipped with engines designed for higher efficiency and longer life. Other features like inductive hardening at crankshaft journals, noise optimal crankcase and Electronic Control Unit enhance the reliability of the engine.

CLUTCH

BharatBenz heavy duty haulage trucks have a large clutch plate diameter of 362 mm in 16 tonne trucks and 395 mm in 25, 31 and 37 tonne trucks. This ensures more contact area for better power transmission and lower slippage. Also, a higher wear depth of 3.5 mm results in longer life and less maintenance.



Gearbox

GEARBOX

The strong and durable gearbox has a higher centre distance of 130 mm between the main shaft and counter shaft. This provides bigger and stronger gears with more contact area, thus increasing gear life.



Rear suspension

REAR SUSPENSION

BharatBenz multi-axle rigid vehicles have a heavy duty balancer type rear suspension that transfers higher reaction on the drive axle. This ensures better traction and minimal slippage which in turn improves the load carrying ability of the vehicle.



Chassis

CHASSIS

Higher depth of 272 mm in 16 tonne trucks, 284 mm in 25, 31 and 37 tonne trucks and higher web width of 70 mm along with full depth cross member provide chassis stiffness, thus improving the vehicle's stability and load bearing ability. The robust and durable frame of the chassis is shot-blasted and powder-coated to increase corrosion resistance and make it long-lasting.

REAR AXLE

It is a heavy duty banjo type axle which ensures higher strength and durability. A larger face width of crown wheel allows more contact area which ensures longer life. Low reduction ratio enables lower torque step down, again increasing the life of the crown wheel and pinion.



CRAFTED TO CONQUER EVERY TERRAIN.

Equipped with a host of advanced features, our haulage trucks can easily negotiate sharp turns, lofty hills and narrow roads.

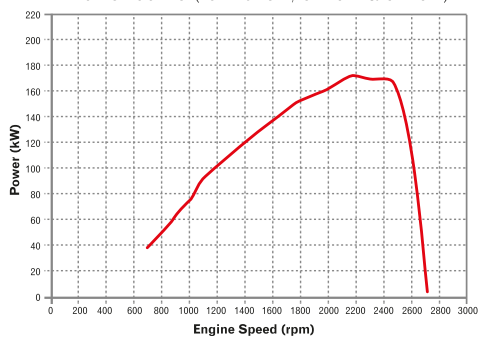
POWER

Based on insights of usage patterns across India, we've integrated several features that ensure unmatched performance. BharatBenz heavy duty haulage trucks give higher power with optimal fuel economy, to enable you to maximise your revenues. Faster turnaround time and more trips in a year are the direct result of more power.

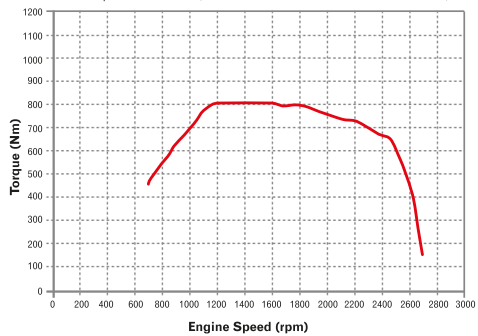
PICKUP

With additional 40 Nm torque, the engines powering the BharatBenz heavy duty haulage trucks ensure better pickup and smoother acceleration. This is essential in city operations or in start-stop traffic conditions encountered while entering any major urban centre. Trips can be completed in lesser time resulting in more trips and more revenue.

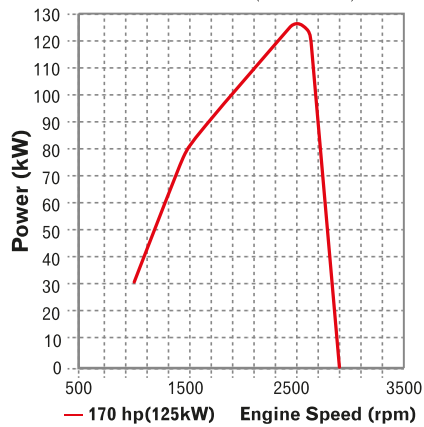
Power curve (for 2523R, 3123R & 3723R)



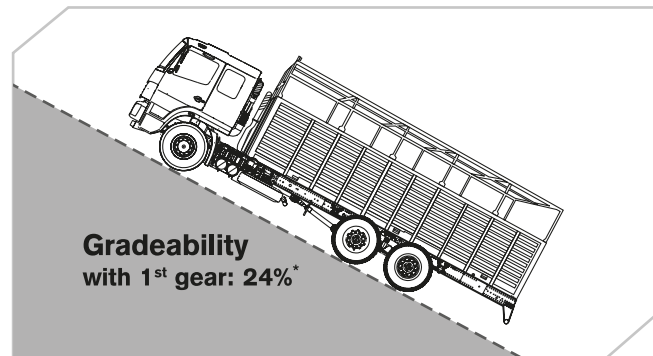
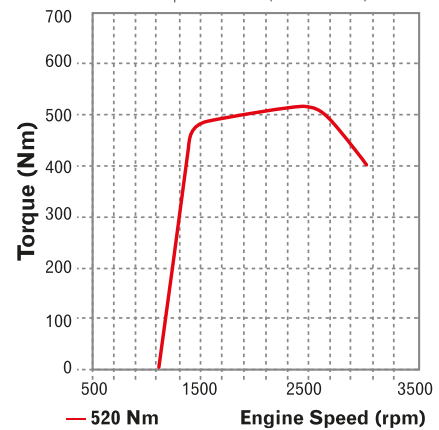
Torque curve (for 2523R, 3123R & 3723R)



Power curve (for 1617R)



Torque curve (for 1617R)



*In 2523R haulage truck

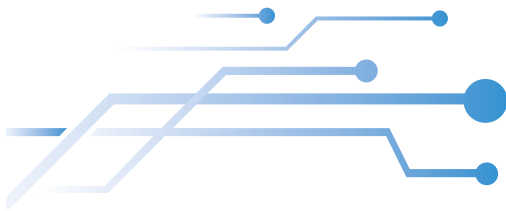
GRADEABILITY

The true test of a truck's performance lies in its ability to negotiate hilly terrain and its load-carrying capacity. A much higher power to weight ratio gives BharatBenz heavy duty haulage trucks outstanding gradeability, enabling them to effortlessly navigate the most hostile road conditions and easily climb gradients even with full load.



Winding roads

STRESS-FREE LOW MAINTENANCE AT LOW COSTS.



With longer service intervals, the BharatBenz heavy duty haulage trucks set a new benchmark in the industry. Most of the maintenance required is cost effective and preventive in nature. This means more uptime of the vehicle which leads to more earnings and less tension for you.



Human machine interface

HUMAN MACHINE INTERFACE

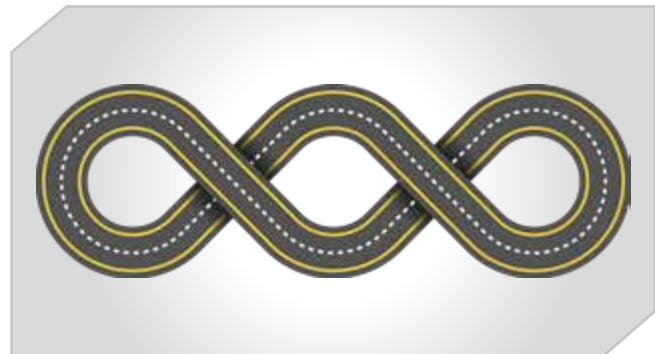
The reliable and intelligent instrument cluster provides warning signals for various parameters and helps in preventive maintenance. Ideally positioned for clear visibility, it provides plenty of useful features like trip mileage, neutral and reverse gear indication, etc. in 25, 31 and 37 tonne trucks and trip mileage, distance to empty, etc. in 16 tonne trucks.

HIGH DURABILITY

All aggregates, including clutch and brake lining, are designed for higher durability. This ensures longer and hassle-free productive life for the vehicle and peace of mind for you.

TEMPERATURE INDICATOR

The warning signal indicating overheating of the engine allows the driver to take corrective measures before it causes any damage.



Longer service intervals

LONGER SERVICE INTERVALS

BharatBenz heavy duty haulage trucks guarantee longer service intervals ensuring your trucks are on the road, always. These trucks are designed with minimal lubrication points. The longer, synchronised driveline oil change intervals of the BharatBenz heavy duty haulage trucks reduce maintenance costs and increase uptime.



Clutch wear indicator

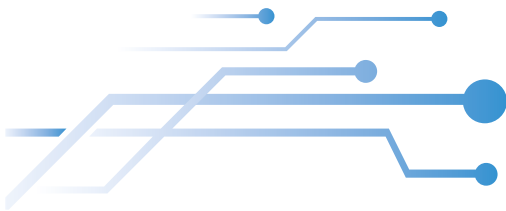
CLUTCH WEAR INDICATOR

Driver-friendly indicators for wear (viz., clutch wear indicator, air filter choke indicator) help in preventive maintenance, ensuring trouble-free running.

Model	Engine oil	Transmission oil (Gearbox Oil)	Differential oil	Hub greasing (Live axle)	Hub greasing (Dummy axle)
2523R	50,000 Km*	1,00,000 Km	2,00,000 Km	2,00,000 Km	1,00,000 Km
3123R	50,000 Km*	1,00,000 Km	2,00,000 Km	2,00,000 Km	1,00,000 Km
3723R	50,000 Km*	2,00,000 Km	2,00,000 Km	2,00,000 Km	1,00,000 Km

*Option of extended engine oil change interval of 1,00,000 Km after 1st service is available

INDIA'S SAFEST AND MOST COMFORTABLE TRUCK.



BharatBenz heavy duty haulage trucks are designed keeping the safety and comfort of your drivers in mind. Superior features ensure these vehicles are stable and aid in safe operations. This will help you avoid unforeseen problems and maximise your productivity as well as profitability.

- **ENGINE BRAKE ENSURES SAFER DOWNHILL OPERATION**

The constant throttle valve engine brake in 25, 31 and 37 tonne trucks and air operated butterfly valve in 16 tonne trucks cut off the exhaust path from the engine, thereby slowing down the vehicle. This ensures better control of the loaded vehicle during downhill operations.

- **SHORTER TURNING CIRCLE DIAMETER**

Wheel lock angle of 45° in 25, 31 and 37 tonne trucks and 46° in 16 tonne trucks ensure that the turning circle diameter is very short. The vehicle can easily navigate sharp turns, hairpin bends and narrow lanes.

- **INTER-WHEEL DIFFERENTIAL LOCK**

Inter-wheel differential locks in 25, 31 and 37 tonne trucks help avoid wheel spinning on slushy roads, enabling you to easily pass such roads.

- **NEGLIGIBLE ACCELERATION TO ASCEND HILLS**

90% of engine torque is available at 900 rpm in 25, 31 and 37 tonne trucks which means that high torque is available at low engine speeds. So while ascending a hilly terrain, only negligible accelerator push is required to start the upward movement, even in a loaded vehicle.

- **ANTI-ROLL BAR**

Anti-roll bar ensures that tyres are in constant contact with the road, enabling better road grip and stability of the vehicle, especially during cornering and lane-changing at high speeds.



Anti-roll bar

Wider brake lining

- **SHORTER BRAKING DISTANCE**

Wider brake lining coupled with engine and exhaust brake ensures efficient braking and shorter braking distance.

- **CRASH TESTED CABIN**

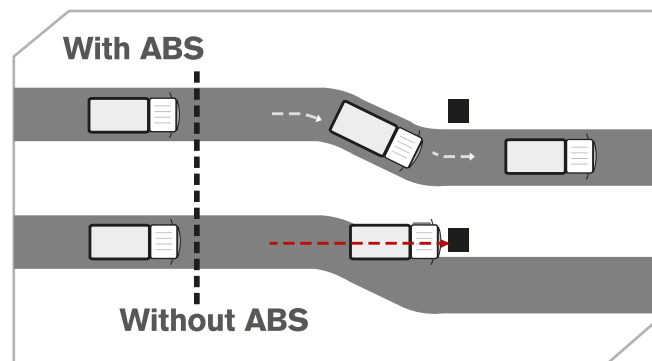
Crash tested cabin ensures maximum survival space for the cabin crew in the unfortunate event of a collision.



Fuel theft protection device

- **FUEL THEFT PROTECTION DEVICE**

A meshed grill is placed at the mouth of the fuel tank to prevent any fuel theft between trips.



Anti-lock braking system (ABS)

- **ANTI-LOCK BRAKING SYSTEM**

ABS improves vehicle control and reduces stopping distance on wet and slippery surfaces, thus ensuring safety.

- **DIFFERENTIAL LOCK BUZZER**

It alerts your driver when they drive with the differential lock switched on and helps prevent rear-axle damage.

- **SIDE IMPACT BEAM AND STEEL BUMPER**

For higher driver safety.



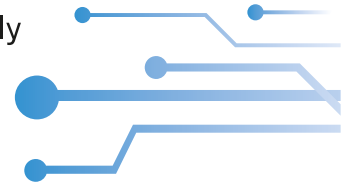
Dual chamber headlamps

- **DUAL CHAMBER HEADLAMPS**

Existing headlamps switch between a high beam bulb and a low beam bulb. In dual chamber headlamps, both the bulbs glow when the high beam is activated, ensuring higher intensity light and better visibility.

DRIVER FRIENDLY FEATURES TO INCREASE PRODUCTIVITY.

The cabins of BharatBenz heavy duty haulage trucks have been carefully designed to ensure your driver remains fresh and alert for longer, thereby boosting productivity and enabling him to complete more trips. Such increased efficiency will result in higher revenues and better staff retention for you.



Cabin

COMFORTABLE CABIN

- Ergonomically designed AC cabin.
- Sleeper cab with wide berth.
- Most comfortable driving position: 3-way adjustable seat in 25, 31 and 37 tonne trucks and 2-way adjustable seat in 16 tonne trucks.
- Twin co-driver seat.
- Fully sealed cabin: cuts off vehicle noise and reduces driver fatigue.
- Easy entry into cabin with wide doors opening to almost 90° in 25, 31 and 37 tonne trucks and 80° in 16 tonne trucks.

LED LAMPS

Updated design, highly durable and ensures greater visibility in all light and weather conditions.

INCREASED VENTILATION

- Optional air-conditioning in all products.
- Bigger rear sliding windows provide better cross ventilation inside the cabin.



Climate control for all weathers

CRUISE CONTROL

Helps your driver automatically maintain the speed of the BharatBenz heavy duty haulage truck with a flick of a switch, thereby ensuring fatigueless driving.



Cruise control

EASY GEAR SHIFTING

Simplified gear shift arrangement with ball joint mechanism and double synchrocone ensures smoother and precise gear shifting, giving you a car-like feel.



Parabolic front suspension

PARABOLIC FRONT SUSPENSION

BharatBenz heavy duty haulage trucks come with fully suspended cabins equipped with parabolic front suspension in 25, 31 and 37 tonne trucks. Parabolic suspension with wider mounting span improves drive quality and reduces driver fatigue.



Reverse camera and display

REVERSE CAMERA AND DISPLAY

State-of-the-art technology that aids your driver in safely reversing.

STUNNING AESTHETICS. INSIDE AND OUT.

With a premium wooden textured dashboard, washable trims, majestic exteriors and more, BharatBenz heavy duty haulage trucks are a work of art.

CUBIC PRINTED DASHBOARD

Gives a premium appeal to the interiors of the BharatBenz heavy duty haulage truck and improves overall cabin aesthetics.

ALL BLACK INTERIORS

Easy to maintain and enhances cabin ambience.

WASHABLE TRIMS

Easily washable trims help your driver maintain a clean cabin.

FABULOUS EXTERIORS

With its striking design, the BharatBenz heavy duty haulage truck ensures your fleet always stands out from the competition.





All black interiors



Cubic printed dashboard

TECHNICAL SPECIFICATIONS

1617R (4x2)

2523R (6x2)

Dimensions CBC (mm)

Wheel Base	5100	5900	6700	5175	6375
Overall Length	8600	9815	11995	9867	11995
Overall Width	2440	2440	2440	2490	2490
Overall Height	2600	2600	2600	2960	2960
Front Overhang	1335	1335	1335	1460	1460
Rear Overhang	2165	2580	3960	2557	3485
Minimum Ground Clearance	270	270	270	264	264
Load Body Length	5985 (20 ft.)	7200 (24 ft.)	9500 (31 ft.)	7300(24 ft.)	9400 (31 ft.)

Weight

Gross vehicle weight (GVW)	16,200 kg	25,000 kg
----------------------------	-----------	-----------

Engine

Model	4D34i	DE175BS4
Maximum power	125 kW (170 hp) @ 2500 rpm	175 kW (235 hp) @ 2200 rpm
Maximum torque	520 Nm @ 1500 - 2000 rpm	850 Nm @ 1200 - 1600 rpm
No. of cylinders, Displacement	4 Nos., 3907 cc	6 Nos., 6372 cc
Emission Compliance	BSIV	BSIV

Transmission

Gearbox Model & Type	G 85 - 6F+1R, Mechanical, Synchromesh Gears	G85, 6F+1R, Mechanical, Synchromesh Gears
Clutch Type, Diameter	Single dry plate, Hydraulic control with clutch booster, 362 mm	Single dry plate, Hydraulic control with clutch booster, 395 mm

Axle

Front Axle Model, Type	IF 6.0, Reverse Elliot	IF6.6, Reverse Elliot
Rear Axle Model, Type	MS145, Fully floating, Hypoid gears	IR440, Fully floating, Hypoid gears
Rear Axle Ratio	5.57	5.875

Chassis frame & Suspension

Chassis Type	Channel section with cross member	Channel Section with cross members
Depth x Flange width x Thickness	272 mm x 70 mm x 6 mm	284 mm x 70 mm x 7 mm
Front Suspension	Semi elliptic leaf spring with shock absorbers	Parabolic type leaf spring with 2 hydraulic shock absorbers
Pusher Axle Suspension		
Rear Suspension	Semi elliptic laminated leaf spring	Balancer type semi elliptical leaf spring
Anti-roll Bar	Optional (Front & Rear)	Standard on Front axle Standard on (Optional on rear axle) both axles

Brakes & Tyres

Service Brake	Pneumatic, Foot operated, Dual line with ABS	Pneumatic, Foot operated, Dual line with ABS
Parking Brake	Pneumatically operated hand control valve	Pneumatically operated hand control valve
Wheel Rims & Tyres	7.25" x 20" & 10.00 R 20 16PR	8.25" x 22.5" & 295/80R 22.5 16PR

Steering & Cabin

Steering Type	Hydraulic power assisted	Hydraulic power assisted
Cabin	Sleeper Cabin with berth, Tilttable	Sleeper Cabin with berth, Tilttable

Fuel tank & Electricals

Fuel Tank	200 litres	380 litres
AdBlue Tank	27 litres	60 litres
Voltage	24 V Electrical System	24 V Electrical System
Battery Capacity	2 x 12 V, 75 Ah	2 x 12 V, 120 Ah

Performance

Maximum Gradeability	21.5%	24%
Maximum Geared Speed	80 km/h	80 km/h
Minimum Turning Circle Diameter	17.1 m 19.8 m 22.6 m	18.7 m 22.5 m

Configuration

Standard	Cabin with Chassis	Cabin with Chassis
Load Body Option	Fixed Side Deck, High Side Deck	Fixed Side Deck, High Side Deck
Option packs	Hazardous Goods Package	Hazardous Goods Package/High CG Pack
Colour Options	Arctic white, Golden brown	Arctic white, Golden brown

TECHNICAL SPECIFICATIONS

3123R (8x2)

3723R (10x2)

Dimensions CBC (mm)

Wheel Base	5775	6375	6575
Overall Length	9867	11067	11044
Overall Width	2490	2490	2490
Overall Height	2960	2960	2975
Front Overhang	1460	1460	1460
Rear Overhang	1957	2557	2334
Minimum Ground Clearance	264	264	260
Load Body Length	7300(24 ft.)	8500 (28 ft.)	8420 (28 ft.)

Weight

Gross vehicle weight (GVW)	31,000 kg	37,000 kg
----------------------------	-----------	-----------

Engine

Model	DE175BS4	DE175BS4
Maximum power	175 kW (235 hp) @ 2200 rpm	175kW (235 hp) @ 2200 rpm
Maximum torque	850 Nm @ 1200 - 1600 rpm	850 Nm @ 1200-1600 rpm
No. of cylinders, Displacement	6 Nos., 6372 cc	6 Nos., 6372 cc
Emission Compliance	BSIV	BSIV

Transmission

Gearbox Model & Type	G85, 6F + 1R, Mechanical, Synchromesh Gears	G131, 9F + 1R, Mechanical, Synchromesh Gears
Clutch Type, Diameter	Single dry plate, Hydraulic control with clutch booster, 395 mm	Single dry plate, Hydraulic control with clutch booster, 395 mm

Axle

Front Axle Model, Type	IF6.6, Reverse Elliot & IT10, Pusher	IF6.6 Reverse elliot & IT10, Pusher
Rear Axle Model, Type	IR440, Fully floating, Hypoid gears	IR440 Fully floating, Hypoid gears
Rear Axle Ratio	5.875	4.778

Chassis frame & Suspension

Chassis Type	Channel Section with cross members	Channel Section with cross members
Depth x Flange width x Thickness	284 mm x 70 mm x 7 mm	284 mm x 70 mm x 7 mm
Front Suspension	Parabolic leaf spring with 2 hydraulic shock absorbers	Parabolic leaf spring with 2 hydraulic shock absorbers
Pusher Axle Suspension	Air bellow	Air bellow
Rear Suspension	Balancer type semi elliptical leaf spring	Balancer type semi elliptical leaf spring
Anti-roll Bar	Standard on Front axle Standard on (Optional on rear axle) both axles	Standard on Front axle (Optional on rear axle)

Brakes & Tyres

Service Brake	Pneumatic, Foot operated, Dual line with ABS	Pneumatic, Foot operated, Dual line with ABS
Parking Brake	Pneumatically operated hand control valve	Pneumatically operated hand control valve
Wheel Rims & Tyres	8.25" x 22.5" & 295/80R 22.5 16PR	8.25" x 22.5" & 295/80R 22.5 16PR

Steering & Cabin

Steering Type	Hydraulic Power assisted	Hydraulic Power assisted
Cabin	Sleeper cabin with berth, Tilttable	Sleeper cabin with berth, Tilttable

Fuel tank & Electricals

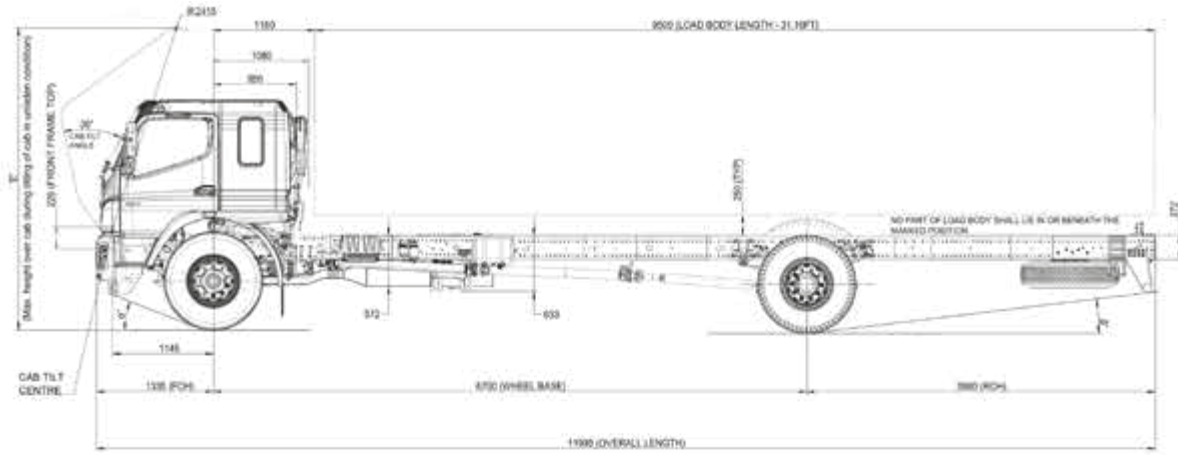
Fuel Tank	380 litres	330 litres
AdBlue Tank	60 litres	60 litres
Voltage	24 V Electrical System	24 V Electrical System
Battery Capacity	2 x 12 V, 120 Ah	2 x 12 V, 120 Ah

Performance

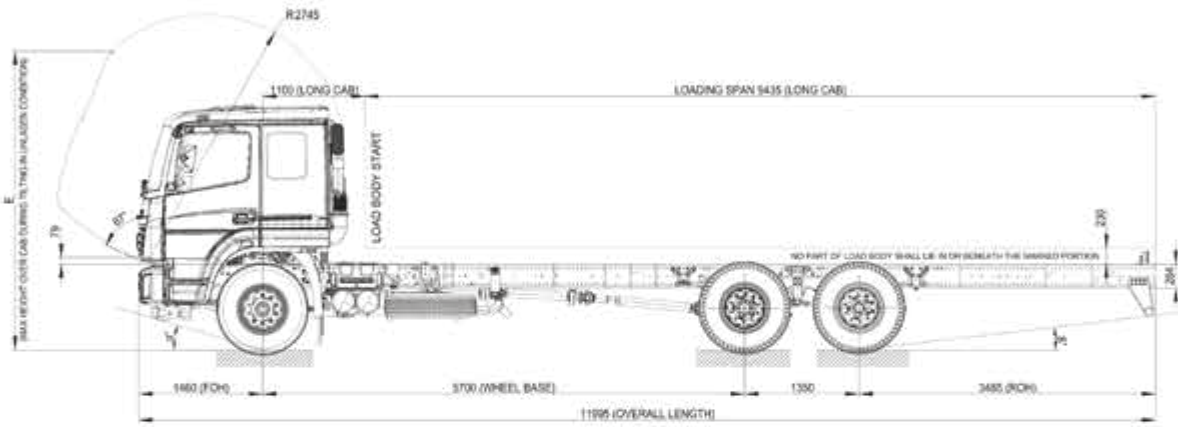
Maximum Gradeability	19.3%	29.6%
Maximum Geared Speed	80 km/h	80 km/h
Minimum Turning Circle Diameter	21.6 m	23.2 m

Configuration

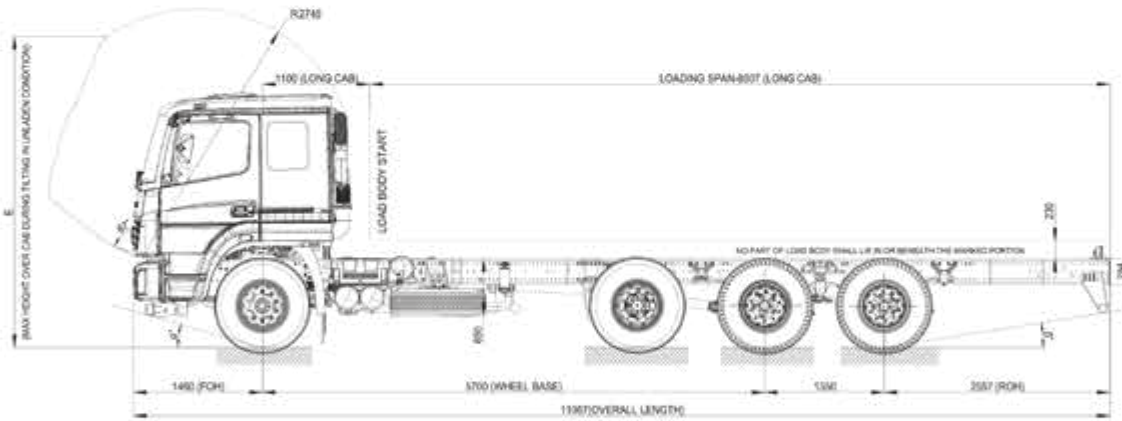
Standard	Cabin with Chassis	Cabin with Chassis
Load Body Option	Fixed Side Deck, High Side Deck	-
Option packs	Hazardous Goods Package/High CG Pack	Hazardous Goods Package/ High CG Pack
Colour Options	Arctic white, Golden brown	Arctic white, Golden brown



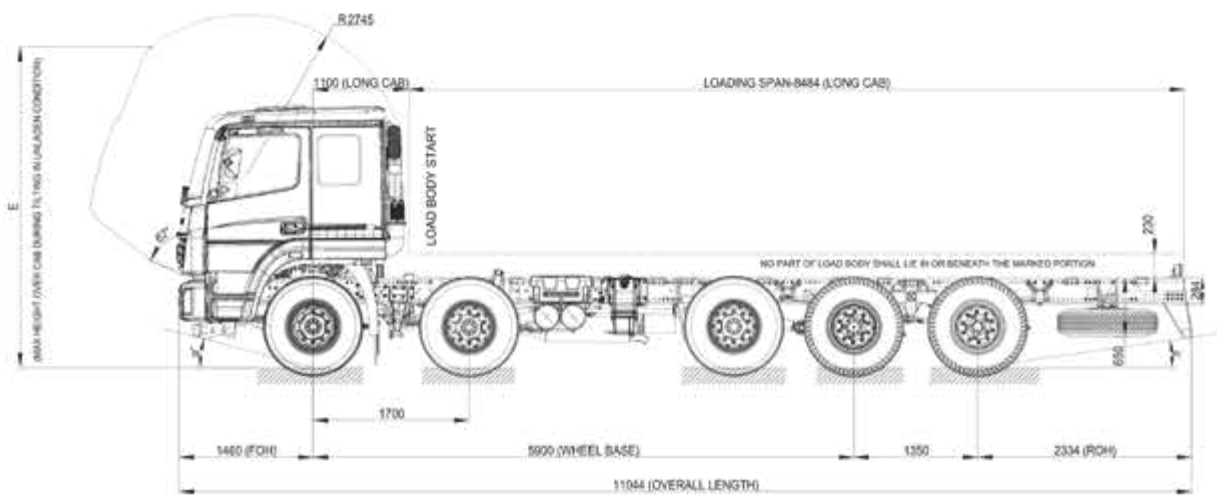
1617R



2523R



3123R



3723R



ONE STOP TRUCKING SOLUTION.

BharatBenz is committed to Indian trucking. Our rigorous study of the conditions has enabled us to build trucks ready to take on the challenges of the Indian terrain and businesses, head on. Our state-of-the-art manufacturing plant in Chennai is only one of the many steps in our journey on Indian roads.

PROSERV

SERVICE THAT LOOKS AHEAD FOR YOU

DESIGNED TO DELIVER



- One Stop Service Workshop: Guaranteed service support any time of the day.
- High Productive Express Bays: Roadside assistance for all the quick fixes your BharatBenz truck requires, helping you save precious time.
- Specialist Driver Trainers: Expert trainers who will help your driver learn efficient and safe driving.
- Advanced diagnostic systems: To aid in troubleshooting and eliminating unforeseen problems.
- Dial a service or part: Call up to book a service or to ensure the availability of any part.

EXPERIENCE EXPERTISE



- Highly skilled service staff to ensure quick and perfect service every time.
- Online technical information platform – Ascent (After Sales Central) a multilingual, animated system to facilitate information access at all service centres.
- Mobile service workshops to ensure reach within 4 hours in case of emergency.
- Exclusive 24x7 customer support and technical hotline for all service needs.
- Customised on-site service support to ensure high uptime.

STAY A STEP AHEAD



Ascent

- Maintenance Pack that will take care of all maintenance-related needs for the next 5 years.
- Extended Warranty to ensure high-cost aggregate repairs will be the least of your concerns for up to 5 years.
- BharatBenz Insurance: a cashless facility with towing and zero-depreciation features to ensure quick repairs anywhere in India.

BHARATBENZ Financial



- Structured EMI payback options customised to suit your business's cashflow.
- Innovative "All in One EMI" provides a fully integrated financing solution for the vehicle, maintenance pack, insurance and extended warranty.
- 24x7 customer support to provide hassle-free claims management across India.

Call on our toll-free no.: 180030012345 or email us at dicv_service@daimler.com

Daimler India Commercial Vehicles Pvt. Ltd.

SIPCOT Industrial Growth Centre, Oragadam,
Mathur Post, Sriperumbudur Taluk,
Kancheepuram District - 602105, Tamil Nadu, India.

Ph: +91 44 49694000; Fax: +91 44 49694881

Email: sales_dicv@daimler.com; Website: www.bharatbenz.com

Options and features shown may not be part of standard equipment. Colours may vary owing to printing. Images shown are indicative and may not represent the actual products or services. BharatBenz trucks conform to Bharat Stage IV norms. Specifications are subject to change without notice. These are indicative specifications for reference only.

Date of print: 3rd April, 2017